

Bridge Collapse Sunbury, Ohio



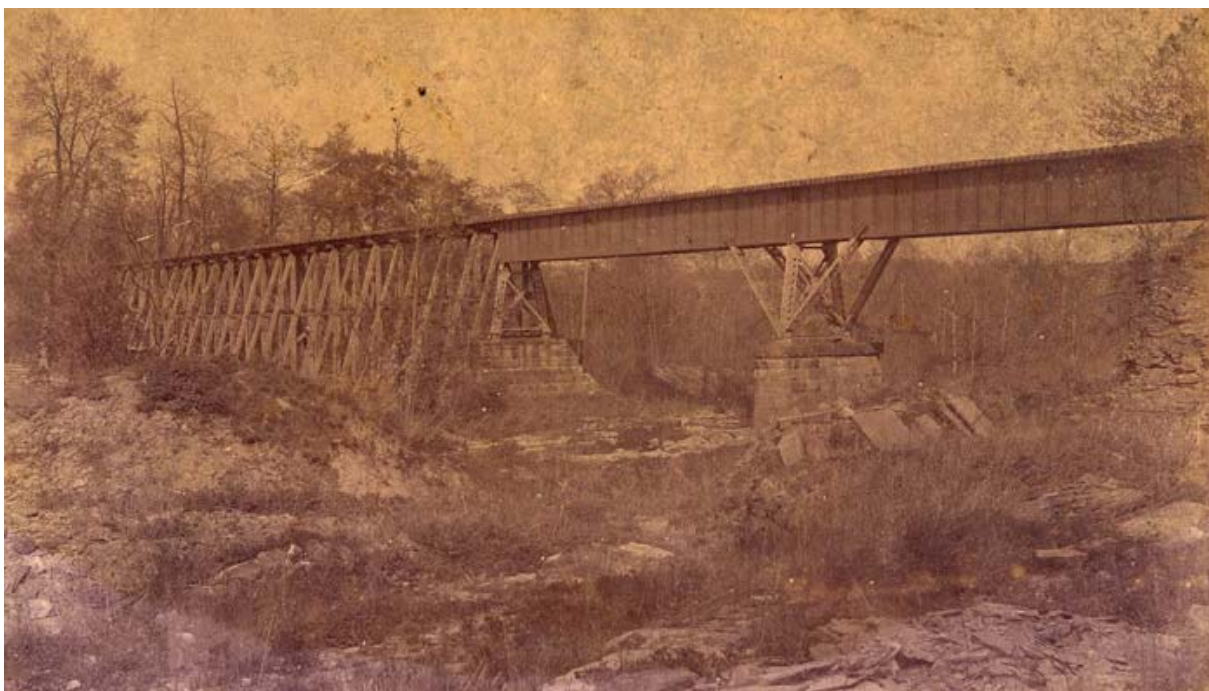
In 1878 the Cleveland Mt. Vernon & Columbus Railroad bridge in Sunbury, 20 miles north of Columbus, collapse under the weight of a freight train. The locomotive dropped an estimated 30 feet. The C Mt.V & C was built in 1873. Later it would become the Cleveland Akron & Columbus.

There is not much known about the wreck other than a few photographs. It is an example of a type of wreck that was more frequent in the early days of railroading. To get the railroad built and operating short cuts, incompetence or inferior building materials led to problems like collapsing bridges.

The Big Walnut Area Historical Society website states that the bridge was rebuilt and then collapsed again in 1910. The CA&C is gone but that third bridge is still standing just north of Sunbury. The railroad got it right the third time.



Now what do we do? C Mt. V & C RR locomotive sitting next to Big Walnut creek. A great show for the spectators standing on the hill. Photo from the Big Walnut Area Historical Society website.



The replacement for the 1878 collapsed bridge. According to the Big Walnut Area Historical Society this bridge had to be replaced in 1910 when it also collapses. Photo from the Big Walnut Area Historical Society website.

To learn more about the eastern portion of Delaware County visit www.bigwalnuthistory.org